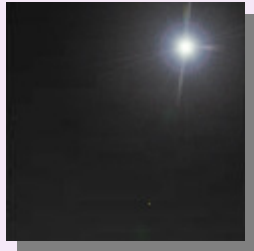
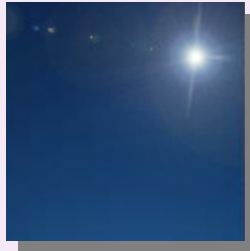


COLOURED MIRRORS & SATINS

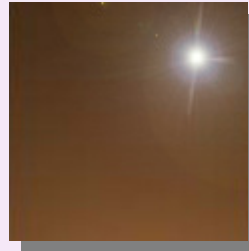
MIRRORS



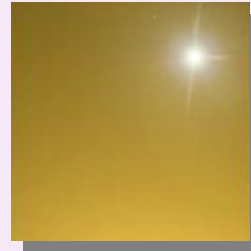
Black



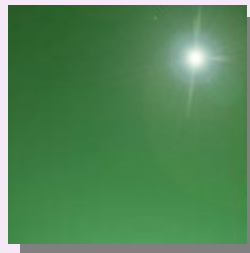
Blue



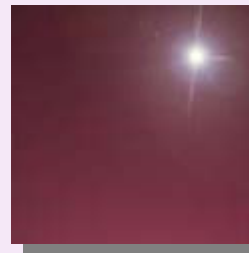
Bronze



Gold



Green



Purple

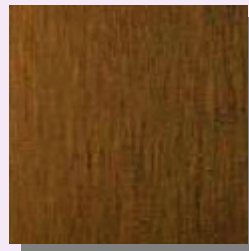
SATINS



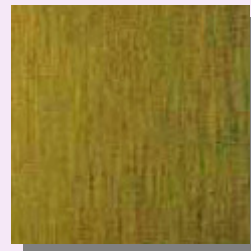
Charcoal



Blue



Bronze



Gold



Green



Purple

COLOURED MIRRORS & SATINS

EX STOCK

Stainless Steel is coloured by the interference of light process. There are no paints, dyes or pigments involved in the process and the colours are totally colourfast.

- Mirror finish is similar standard to glass mirror.
- Satin finish is equivalent of No. 4 finish.

Finishes:

Mirror & Satin

Colours available: Black, Blue, Bronze, Charcoal, Gold

Sheet size:

2500 x 1250 x 0.9mm
(usable width of 1230mm due to gripper marks down one edge of sheet from colouring process)

Lead Time: Approx. 2 - 3 working days. subject to material availability

N.B. Black only available in Mirror finish, Charcoal only available in Satin finish

INDENT

Finishes:

Mirror & Satin

Colours available: Black, Blue, Bronze, Champagne, Charcoal, Gold, Green, Purple, Rosy Gold

Lengths: Any length up to 3000mm
(standard lengths are 2500mm & 3000mm)

Widths: 1000mm & 1250mm

Thicknesses: 0.8mm, 1.0mm, 1.2mm, 1.5mm, 2.0mm

Lead Time: Approx. 12 - 14 weeks ex works (shipped via Seafreight)
Approx. 6 - 8 weeks ex works (shipped via Airfreight)

N.B. Material can be freighted economically from the UK with other stock orders, so there are no minimum requirements except time.